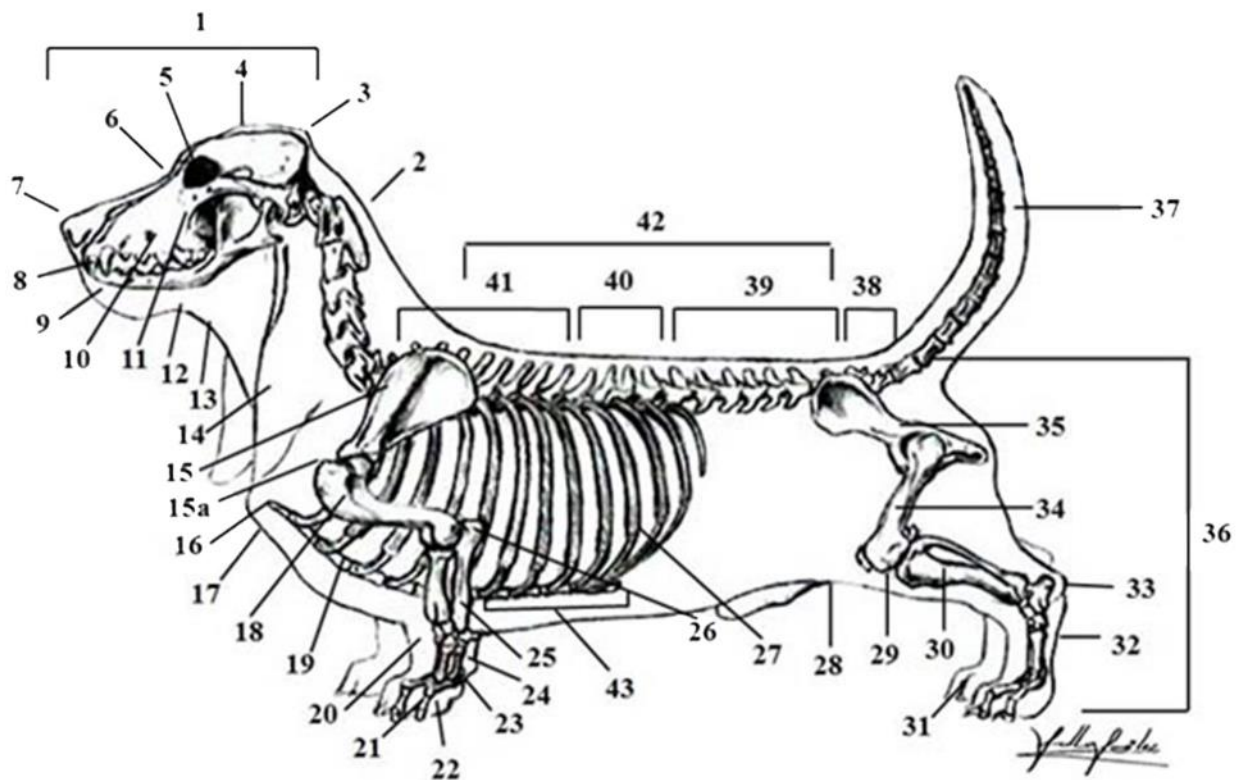


32 The Basset Hound Illustrated Standard

Parts of the Basset Hound With Definitions from the Breed Standard

Descriptions *not in italics* describe what the AKC Breed Standard calls for regarding that specific part or feature in the Basset Hound. Definitions in *italicized type* are from Gilbert and Brown. (2001). *K-9 Structure and Terminology*. New York: Howell.



1. **HEAD** Large, well proportioned, medium width; covered with loose skin.
2. **NECK** Powerful; good length; well arched.
3. **OCCIPUT** (*High point of the back part of the head*) - pronounced.
4. **SKULL** Well domed; pronounced occipital protuberance; length from nose to stop is approximately the length from stop to occiput. Top lines of muzzle and skull are straight and lie in parallel planes.
5. **EYES** Soft, sad, slightly sunken; prominent haw; brown or dark brown preferred.
6. **STOP** (*The change in profile lines between the muzzle and skull*) Moderately defined.
7. **NOSE** Darkly pigmented; preferably black; large wide-open nostrils; liver color permissible if conforms with head color.
8. **TEETH** Scissors or even bite.
9. **LIPS** Darkly pigmented; pendulous; fall squarely in front and towards the back in loose hanging flews.

The Basset Hound Illustrated Standard 33

10. **MUZZLE** (Head in front of the eyes) **Deep, heavy, free from snipiness.**
11. **CHEEK** (The side of the head) **Flat; free of cheek bumps** (i.e., the masseter muscles below the eyes are not overly developed).
12. **FLEW** (*The corner rear portion of the upper lip*) **Loose hanging.**
13. **DEWLAP** (*Loose pendulous folds of skin about the neck*) **Pronounced.**
14. **EARS** **Extremely long, low set; fold over end of nose; ends curl slightly inward; set far back on the head at the base of skull.**
15. **SHOULDER BLADE** (*Scapula*) **Well laid back.**
- 15a. **POINT OF SHOULDER** (*Foremost tip of upper arm*)
16. **PROSTERNUM** (*Point of the breastbone. Is in front of point of shoulder when viewed from side.*) **Prominent.**
17. **CHEST** (*Forepart of the body enclosed by the ribs and breastbone*) **Deep, full; prominent sternum showing clearly in front of the legs.**
18. **UPPER ARM** (*Humerus*) **In the Basset Hound it is about the same length as the shoulder blade.**
19. **STERNUM** (*Breastbone; brisket. The lower part of the chest between and in front of the legs*). **Should extend well back behind the front legs.**
20. **FORELEGS** (*Front legs*) **Short, powerful, heavy in bone with wrinkled skin.**
21. **TOES** **Neither pinched nor splayed.**
22. **PAW** (*Foot*) **Massive, very heavy with tough heavy pads; well rounded; both front feet inclined equally a trifle outward.**
23. **PASTERN** (*Region between the wrist and forefoot*). **Feet down at the pastern are a serious fault.**
24. **WRIST** (*Region between the forearm and the pastern*).
25. **ULNA** (*One of the two bones of the foreleg*).
26. **ELBOW** **Set close to the side of the chest.**
27. **RIBCAGE** **Long, smooth; extends well back; well sprung.**
28. **TUCK-UP** (*Area of the lower stomach line or belly*).
29. **KNEE or STIFLE** **Well-let-down.**
30. **LOWER THIGH** (*Second thigh*)
31. **HIND FEET** **Point straight ahead.**
32. **REAR PASTERNS** **Turn neither in nor out. Hind legs are parallel when viewed from behind.**
33. **HOCKS** **Turn neither in nor out.**
34. **UPPER THIGH** (*First thigh*)
35. **PELVIS** (*Provide sockets for attachment of rear legs*)
36. **HINDQUARTERS** **Full and well rounded.**
37. **TAIL** **Set in a continuation of the spine with but slight curvature, and carried gaily in hound fashion.**
38. **CROUP** (*Portion of the body above the hind legs extending from loin to the set-on of tail*).
39. **LOIN** (*Area between the end of the ribcage and croup*).
40. **TRUE BACK** (*The portion of the anatomy between the withers and the loin*).
41. **WITHERS** (*Highest point of the shoulders behind the neck. 1st to 9th thoracic vertebrae*). **Should not exceed 14", over 15" disqualifies.**
42. **BACKLINE** (*Line from the rear of the withers to the tail set*) **Straight, level, and free from any tendency to sag or roach.**
43. **POSTERIOR STERNUM** (*Sternum is the portion of the breastbone running between the forelegs and extending backward to the line of the abdomen*). **BHCA JE refers to the sternum that extends back behind the front legs as posterior sternum.**